

NATIONAL BANK OF POLAND WORKING PAPER No. 107

Almost periodically correlated time
series in business fluctuations analysis

Łukasz Lenart, Mateusz Pipień

Łukasz Lenart – Economic Institute in National Bank of Poland, Department of Mathematics in Cracow University of Economics, e-mail: lukasz.lenart@uek.krakow.pl

Mateusz Pipień – Economic Institute in National Bank of Poland, Department of Econometrics and Operations Research in Cracow University of Economics, e-mail: eepipien@cyf-kr.edu.pl

The authors would like to thank Paweł Skrzypczyński, Michał Gradzewicz, Jakub Growiec, Andrzej Kocięcki and Michał Rubaszek for many valuable suggestions and remarks

Design:

Oliwka s.c.

Layout and print:

NBP Printshop

Published by:

National Bank of Poland
Education and Publishing Department
00-919 Warszawa, 11/21 Świętokrzyska Street
phone: +48 22 653 23 35, fax +48 22 653 13 21

© Copyright by the National Bank of Poland, 2012

<http://www.nbp.pl>

Table of Contents

1	Introduction	3
2	Basic notation and definitions	5
3	Estimation problem	7
4	Subsampling procedure and consistency	8
5	Statistical model of cyclical fluctuations	10
5.1	Model structure and assumptions	10
5.2	Cycle identification and estimation	12
6	Empirical illustration	16
7	Concluding remarks	20
8	Appendix	21

Abstract

We propose a non-standard subsampling procedure to make formal statistical inference about the business cycle, one of the most important unobserved feature characterising fluctuations of economic growth. We show that some characteristics of business cycle can be modelled in a non-parametric way by discrete spectrum of the Almost Periodically Correlated (APC) time series. On the basis of estimated characteristics of this spectrum business cycle is extracted by filtering. As an illustration we characterise the main properties of business cycles in industrial production index for Polish economy.

Keywords: business cycle, industrial production index, almost periodically correlated time series, subsampling procedure.

JEL: C01, C02, C14

1 Introduction

Seminal works, that originated interest in empirical modelling of business cycles in macroeconomy, clearly indicated their inhomogeneity for both, spatial and time domain. In particular, introductory remarks of W.C. Mitchell in *Business Annals*, Mitchell (1926), contains the following suggestion: *No two recurrences in all the array seem precisely alike. Business cycles differ in their duration as wholes and in the quickness and the uniformity with which they sweep from one country to another.* When identifying business cycle R.E. Lucas proposed its own conception, which, as he states in his 1977 paper, identifies the business cycle with *movements about trend in gross national income.* These movements are typically irregular in period and in amplitude. Regularities are only observed *in the co-movements among different aggregative time series*; see Lucas (1977). It is clear, that Mitchell initially suggested different time pattern of business cycles for different economies. However, it is obvious, that from the dynamic point of view, as Lucas states, business cycle exhibit irregular and non-periodic character.

For developed economies some stylised facts about business cycles are known in the literature; see King and Rebelo (1999) or Stock and Watson (1999). But, we see the lack of precise and well established methods of formal statistical modelling of those empirical properties. It prompts new studies resulting many different approaches and frameworks of business cycle extraction; see for example exhaustive review presented Diebold and Rudebusch (1996). When the lack of the theory of statistical inference seems to be a persistent state, the consensus about empirical properties of business cycles is based, either on an ad-hoc reasoning, or on the empirical results, that are possible to confirm using a group of methods, built on the basis of relative different frameworks. However, the extraction of the business cycle component from observed time series is still a controversial issue. In particular, since there is ongoing interest in many approaches to separate growth component from the cyclical component, and because there is no consensus on how to detrend the data, the business cycle stylised facts are sensitive to the adopted procedure. Hence, this has become not only a controversial issue in the business cycle theory itself, but also a subject of criticism by competing empirical approaches, as well.

The main purpose of this paper is to present a novel approach to formal business cycle estimation. We propose a non-standard subsampling procedure, in order to make formal statistical inference about the properties of the business cycle. We show, that business cycle can be modelled by parameters of discrete spectra of the Almost Periodically Correlated (APC) stochastic process. The APC class is a generalisation of

Periodically Correlated (PC) class of stochastic processes, introduced by Gladyshev (1961). The vast literature confirmed substantial empirical importance and flexibility of PC class in many time series applications, see: Parzen and Pagano (1979), Osborn and Smith (1989), Franses and Boswijk (1996), Franses (1996), Bollerslev and Ghysels (1996), Franses and Ooms (1997), Burridge and Taylor (2001), Franses and Dijk (2005). According to Hurd and Miamee (2007), the periodically correlated stochastic processes are nonstationary, but non-constant unconditional expectation of the process exhibit periodic, and hence regular, evolution in time domain. The generalisation presented in this paper assumes that the mean of the nonstationary time series can be described by almost periodic function, i.e. the function, that belongs to the topological closure of periodic class of functions.

From the definition, APC stochastic processes may describe irregular character of unconditional means for nonstationary time series. Assuming, that detrended time series follows APC, we relax assumption of stationarity of cyclical factor, very commonly imposed in filtering approaches. Nonstationarity of the cycle component of the series, together with possible irregularities in time pattern of the unconditional mean, makes our approach relatively flexible and general. Consequently, incorporating the APC factor into the model of observed discrete time series should result in much more accurate approach to business cycle extraction than those proposed so far.

In the empirical part of the paper we analyse the cyclical behaviour of production sector in Poland with the use of the model with APC stochastic component. We characterise business cycle on the basis of industrial production index and also on some subsector indices. We discuss the empirical results and reflect them to the previous analyses conducted for the Polish economy.

2 Basic notation and definitions

Formally, the second-order and real-valued time series $\{X_t : t \in \mathbb{Z}\}$ is called periodically correlated if both the mean function $\mu(t) = E(X_t)$ and the autocovariance function $B(t, \tau) = \text{cov}(X_t, X_{t+\tau})$ are periodic at t for every $\tau \in \mathbb{Z}$, with the same period T . In order to introduce the class of almost periodically correlated time series we need the definition of almost periodic function. We recall the following definition from Corduneanu (1989):

Definition 2.1. *A real-valued function $f(t) : \mathbb{Z} \rightarrow \mathbb{R}$ of an integer variable is called almost periodic (AP in short), if for any $\epsilon > 0$ there exists an integer $L_\epsilon > 0$, such that among any L_ϵ consecutive integers, there is an integer p_ϵ with the property*

$$\sup_{t \in \mathbb{Z}} |f(t + p_\epsilon) - f(t)| < \epsilon.$$

A second-order real-valued time series $\{X_t : t \in \mathbb{Z}\}$ is called almost periodically correlated if both the mean function $\mu(t) = E(X_t)$ and the autocovariance function $B(t, \tau) = \text{cov}(X_t, X_{t+\tau})$ are almost periodic function of an integer variable, for every $\tau \in \mathbb{Z}$. It is easy to see that any periodic function is almost periodic. Therefore, the class of APC time series is wider than the class of PC time series. During last five decades the APC class was broadly applied in telecommunication (Gardner (1986), Napolitano and Spooner (2001)), climatology Bloomfield et al. (1994)) and many others fields. For exhaustive review of possible applications see Gardner et al. (2006) and Serpedin et al. (2005)). Empirical importance of such a class of nonstationary time series prompted new studies concerning properties and estimation methods.

In APC case the mean function and the autocovariance function $B(t, \tau)$ for any $\tau \in \mathbb{Z}$ has the Fourier representation of the form:

$$\mu(t) \sim \sum_{\psi \in \Psi} m(\psi) e^{i\psi t}, \quad B(t, \tau) \sim \sum_{\lambda \in \Lambda_\tau} a(\lambda, \tau) e^{i\lambda t}, \quad (1)$$

where the Fourier coefficients $m(\psi)$ and $a(\lambda, \tau)$ are given by:

$$m(\psi) = \lim_{n \rightarrow \infty} \frac{1}{n} \sum_{t=1}^n \mu(t) e^{-i\psi t}, \quad a(\lambda, \tau) = \lim_{n \rightarrow \infty} \frac{1}{n} \sum_{j=1}^n B(j, \tau) e^{-i\lambda j}, \quad (2)$$

see Hurd (1991), Hurd and Miamee (2007)). According to Corduneanu (1989) sets $\Psi = \{\psi \in [0, 2\pi) : m_X(\psi) \neq 0\}$ and $\Lambda_\tau = \{\lambda \in [0, 2\pi) : a(\lambda, \tau) \neq 0\}$ are countable. Hence, the set $\Lambda = \bigcup_{\tau \in \mathbb{Z}} \Lambda_\tau$ is also countable. If the time series is PC, then representations (1) become equations and the sets Ψ and Λ are contained in the set $\{2k\pi/T : k = 0, 1, \dots, T-1\}$.

In the problem of business cycles extraction the vast econometric literature exploit

approaches based on the assumption of zero mean imposed on the distribution of stochastic factor describing business fluctuations. Moreover, this stochastic factor is usually modelled under stationarity assumption, leading to the framework that utilises parameters of continuous spectrum. The econometric approach presented in this paper relaxes stationary assumption, and consequently a more general dynamic model of observed time series is subject to empirical analysis. We model business cycles in a non-parametric way, taking into account discrete spectra of observed time series. It means that we characterise business cycles by non-zero frequencies $\psi \in \Psi$ and by corresponding Fourier coefficients $m(\psi)$. The definition and properties of discrete spectra in simple representation see Priestley (1981), or in PC case in Hurd and Miamer (2007).

Notice that any $\psi_0 \in (0, 2\pi)$ corresponds to the length of the cycle $2\pi/\psi_0$. Hence the following testing problem:

$$\begin{aligned} H_0 &: \psi_0 \notin \Psi \\ H_1 &: \psi_0 \in \Psi, \end{aligned} \tag{3}$$

enables to test the statistical significance of the cycle with appropriate length. According to the definition of the set Ψ and Fourier coefficients $m(\cdot)$ our testing problem is equivalent to the following:

$$\begin{aligned} H_0 &: |m(\psi_0)| = 0 \\ H_1 &: |m(\psi_0)| \neq 0. \end{aligned} \tag{4}$$

We consider formulation 4 in details. Since we are interested in business cycle estimation we restrict frequency ψ_0 such that corresponding length of the cycle is not shorter than 1.5 years. This formally means, that in further analysis for monthly data we assume that $\psi_0 \in (0, 0.35)$.

In this paper by amplitude, which corresponds to frequency $\psi \in \Psi \cap (0, 0.35)$, we define the distance between maximum and minimum value of the function $h(t) = 2\text{Re}[m(\psi)e^{i\psi t}]$.

The problem stated above requires statistical theory of detecting significant frequencies in the set Ψ and corresponding Fourier coefficients $m(\cdot)$. In the next sections we present some results given sampling model generated by APC assumption.

3 Estimation problem

By $\{X_{c_n+1}, X_{c_n+2}, \dots, X_{c_n+d_n}\}$ we denote a sample from APC time series $\{X_t : t \in \mathbb{Z}\}$, where $\{d_n\}_{n \in \mathbb{N}}$ is any sequence of integers tending to infinity with n and $\{c_n\}_{n \in \mathbb{N}}$ is any sequence of integers. For any $\psi \in [0, 2\pi)$, estimator $\hat{m}_n^{c_n, d_n}(\psi)$ ($\hat{m}_n^{c, d}(\psi)$ for short) of the parameter $m(\psi)$, in representation (1), based on sample $\{X_{c_n+1}, X_{c_n+2}, \dots, X_{c_n+d_n}\}$ takes the form:

$$\hat{m}_n^{c, d}(\psi) = \frac{1}{d_n} \sum_{j=c_n+1}^{c_n+d_n} X_j e^{-i\psi j}. \quad (5)$$

The standardised version of (5) has asymptotic normal distribution with zero mean; see Lenart (2011b), Theorem 2.1. Additionally, the variance of this distribution is a function of values of the generalised spectral density, calculated at arguments dependent on ψ . For definition and basic properties of generalised spectral density in APC case see Hurd (1989), Dehay and Hurd (1994)). Since the standard theory, presented in Lenart (2011a), provides methods of estimation of generalised spectral density in APC case only under the zero-mean assumption or under the assumption that the set Ψ is known and finite, estimation of generalised spectral density in our case is not possible so far. Therefore, in the paper we exploit subsampling methodology, to construct asymptotically consistent test related to (4). In this approach the asymptotic variance estimation is not of particular interest. Similarly, subsampling methodology was also used for PC case in time domain in Lenart et al. (2008) and for APC case in frequency domain in Lenart (2011a).

The problem of frequency estimation ψ_0 can be solved on the basis of a more generalised approach than presented by Walker (1971). Given assumption that there exists interval I_{ψ_0} , such that $I_{\psi_0} \cap \Psi = \{\psi_0\}$, it is possible to formulate the natural estimator of the unknown frequency ψ_0 of the form $\hat{\psi}_n = \arg \max_{x \in I_{\psi_0}} \{\sqrt{n} |\hat{m}_n(x)|\}$. As it was shown in Lenart (2011b), Theorem 3.1, under some regularity conditions we have:

$$\begin{bmatrix} \hat{m}_n^{c, d}(\hat{\psi}_n) \\ \hat{\psi}_n \end{bmatrix} \xrightarrow{p} \begin{bmatrix} m(\psi_0) \\ \psi_0 \end{bmatrix}. \quad (6)$$

4 Subsampling procedure and consistency

In this section we describe the main idea of the subsampling methodology, according to the approach presented and developed by Politis et al. (1999). We use the same notation. Initially we assume that the time series $\{X_t : t \in \mathbb{Z}\}$ is governed by unknown probability distribution P , that belongs to a certain class of probability measures \mathcal{P} . Denote by $\{X_1, X_2, \dots, X_n\}$ a sample from the time series $\{X_t : t \in \mathbb{Z}\}$. Our goal is to approximate the distribution of

$$v_n(\hat{\theta}_n - \theta(P)), \quad (7)$$

where $\hat{\theta}_n = \hat{\theta}_n(X_1, X_2, \dots, X_n)$ is an estimator of $\theta(P)$, the parameter of interests, and v_n is appropriate normalising sequence. Let $b(n)$ (b for short) be any sequence of integer numbers tending to infinity with n , such that $b < n$ and $b/n \rightarrow 0$.

One of the main assumption in subsampling methodology is that there exists asymptotic distribution of (7). We denote this distribution by $J(P)$, with $J(x, P)$ as a corresponding cumulative distribution functions at point $x \in \mathbb{R}$. Following the idea of Politis et al. (1999) the distribution of (7) can be approximated by its subsampling version of the form:

$$L_{n,b}(x) = \frac{1}{n-b+1} \sum_{t=1}^{n-b+1} \mathbf{1}\{v_b(\hat{\theta}_{n,b,t} - \hat{\theta}_n) \leq x\}, \quad (8)$$

where $\mathbf{1}\{B\}$ is the indicator function of the set B and:

$$\hat{\theta}_{n,b,t} = \hat{\theta}_b(X_t, X_{t+1}, \dots, X_{t+b-1})$$

as an estimator of the unknown parameter $\theta(P)$ obtained on the basis of the sample $\{X_t, X_{t+1}, \dots, X_{t+b-1}\}$, with t as a starting point and b as a size of subsample. Under suitable regularity conditions it is known that (see Politis et al. (1999), Theorem 4.2.1, page 103):

- (i) if x is a continuity point of $J(\cdot, P)$, then $L_{n,b}(x) \xrightarrow{P} J(x, P)$,
- (ii) if $J(\cdot, P)$ is continuous, then $\sup_{x \in \mathbb{R}} |L_{n,b}(x) - J(x, P)| \xrightarrow{P} 0$,
- (iii) If $J(\cdot, P)$ is continuous at point $c(1 - \alpha)$, then

$$P\left(v_n(\hat{\theta}_n - \theta(P)) \leq c_{n,b}(1 - \alpha)\right) \rightarrow 1 - \alpha, \quad (9)$$

where for any $\alpha \in (0, 1)$, we define

$$c_{n,b}(1 - \alpha) = \inf\{x : L_{n,b}(x) \geq 1 - \alpha\},$$

$$c(1 - \alpha) = \inf\{x : J(x, P) \geq 1 - \alpha\}.$$

The implication (iii) is crucial to construct a subsampling confidence interval for the parameter $\theta(P)$.

We are interested in estimation of the absolute value of coefficients of the Fourier representation of the mean of APC process. Namely, we take $\theta(P) = |m(\psi)|$. Subsampling procedure, with $\hat{\theta}_{n,b,t} = |m_n^{t-1,b}(\psi)|$ and $v_n = \sqrt{n}$, is consistent; see for details Lenart (2011b), Theorem 2.3. Consequently, the confidence intervals for the parameter $\theta(P) = |m(\psi)|$, obtained by subsampling procedure, are asymptotically consistent.

Now let take any $\psi_0 \in (0, \pi]$. The test (4) with test statistics $\Pi_n(\{\psi\}) = \sqrt{n}|\hat{m}_n(\psi)|$ and subsampling critical value are asymptotically consistent. In our paper we prove some modification of this result (see Theorem 8.2 in Appendix). We use test statistics $\tilde{\Pi}_n(\{\psi\}) = \sqrt{n}|\hat{r}_n(\psi)|$, that can be interpreted as a value of test statistics $\Pi_n(\{\psi\}) = \sqrt{n}|\hat{m}_n(\psi)|$ based on the sample $\{X_1 - \bar{\mathbf{X}}_n, X_2 - \bar{\mathbf{X}}_n, \dots, X_n - \bar{\mathbf{X}}_n\}$, where $\bar{\mathbf{X}}_n$ is the sample mean for the path $\{X_1, X_2, \dots, X_n\}$. The critical value $\tilde{c}_{n,b}^{\{\psi\}}(1-\alpha)$ is calculated according to the formula that utilises subsampling procedure:

$$\tilde{c}_{n,b}^{\{\psi\}}(1-\alpha) = \inf\{x : \tilde{L}_{n,b}^{\{\psi\}}(x) \geq 1-\alpha\},$$

$$\tilde{L}_{n,b}^{\{\psi\}}(x) = \frac{1}{n-b+1} \sum_{t=1}^{n-b+1} \mathbf{1}\{\sqrt{b}(|\hat{r}_n^{t-1,b}(\psi)| - |\hat{r}_n(\psi)|) \leq x\},$$

where

$$\hat{r}_n^{c,d}(\psi) = \frac{1}{d_n} \sum_{j=c_n+1}^{c_n+d_n} (X_j - \bar{\mathbf{X}}_n) e^{-i\psi j}.$$

and $\hat{r}_n(\psi) = \hat{r}_n^{0,n}(\psi)$.

5 Statistical model of cyclical fluctuations

In this section we present the statistical framework of extraction the cyclical component when the one-dimensional time series describing changes in economic activity is observed. In Section 5.1 we present basic assumptions concerning the model, while in section 5.2 we describe in details the algorithm of formal statistical extraction of business cycle component.

5.1 Model structure and assumptions

Let consider a real-valued time series, denoted by $\{P_t : t \in \mathbb{Z}\}$. At the beginning of this section we assume that the unconditional expectation for the process $\{P_t : t \in \mathbb{Z}\}$ exists for any $t \in \mathbb{Z}$.

An interesting case, that is of particular interest in econometrics is the class of integrated stochastic processes, denoted by $I(d)$ for integration of order $d \in \mathbb{N}$. If we are interested in analysis of $I(d)$ processes in our framework, some additional assumptions should be imposed top assume the existence of unconditional moments. In the case when $\{P_t : t \in \mathbb{Z}\}$ is $I(1)$ process it is sufficient to assume additionally that there exists $t_0 \in \mathbb{Z}$ such that $E(P_{t_0}) < \infty$. Hence we obtain in this case, that $E(P_t) < \infty$ for any $t \in \mathbb{Z}$. More generally, if $\{P_t : t \in \mathbb{Z}\}$ follows $I(d)$ process, then it is sufficient to assume that there exists $t_0 \in \mathbb{Z}$, such that $E(P_{t_0+k}) < \infty$ for $k = 0, 1, \dots, d-1$, to assure moment existence. Consequently, we formally exclude in our analysis processes with pure integration, but some restricted cases, representing strict nonstationarity with finite unconditional mean, may be modelled.

For further analysis we assume that the mean function $\mu_P(t) = E(P_t)$ is defined by the sum of deterministic function $f(t, \beta)$, parameterized by $\beta \in \mathbb{R}^p$, and almost periodic function $g(t)$, with the Fourier expansion of the form:

$$g(t) = \sum_{\psi \in \Psi_P} m_P(\psi) e^{i\psi t}. \quad (10)$$

For convenience, we rewrite $g(t)$ in equivalent representation:

$$g(t) = \sum_{\psi \in \Psi_P \cap [0, \pi]} a_P(\psi) \cos(\psi t) + b_P(\psi) \sin(\psi t).$$

This automatically implies, that:

$$\mu_P(t) = f(t, \beta) + g(t) = f(t, \beta) + \sum_{\psi \in \Psi_P} m_P(\psi) e^{i\psi t}. \quad (11)$$

Equation (11) leads to a more general approach to modelling business fluctuations, than those presented in the literature so far; see for example: Beveridge and Nelson

(1981), Clark (1987), Harvey and Jaeger (1993), Hamilton (1989), Krolzig (1997). The main advantage of our approach is, that it only relies on the specification of the first moment of the time series $\{P_t : t \in \mathbb{Z}\}$, making model assumptions much weaker. To illustrate the importance of our assumptions and generalisation we present an example below.

Example 5.1. Let $\{P_t : t \in \mathbb{Z}\}$ be a time series such that $P_t = P_{t-1} + \epsilon_t$, where $E(P_0) = b$ and $\{\epsilon_t : t \in \mathbb{Z}\}$ is APC time series with expectation function $\mu_\epsilon(\cdot)$ such that $\mu_\epsilon(t) = a + g(t) - g(t-1)$, where $g : \mathbb{Z} \rightarrow \mathbb{R}$ is a function of the form:

$$g(t) = \sum_{\psi \in \Psi} m(\psi) e^{i\psi t},$$

$a \in \mathbb{R}$ and $\text{card}(\Psi) < \infty$. Notice that for any $t \geq 1$ we have

$$P_t = P_0 + \epsilon_1 + \epsilon_2 + \dots + \epsilon_t.$$

Therefore

$$E(P_t) = b + \sum_{j=1}^t E(\epsilon_j) = b + at - g(0) + g(t) = f(t, \beta) + g(t),$$

where $f(t, \beta) = \beta_0 + \beta_1 t$, $\beta_0 = b - g(0)$, $\beta_1 = a$. This means that time series $\{P_t : t \in \mathbb{Z}\}$ can be represented as (11). If $g(t) \equiv 0$, then $\mu_\epsilon(t) = a$, and time series $\{P_t : t \in \mathbb{Z}\}$ can be interpreted as $I(1)$ process with drift and assumption $E(P_0) = b$.

The function $f(t, \beta)$ can be interpreted as a trend component, modelled in this paper by the polynomial. The function $g(t)$ contains summarised information about seasonal fluctuations, business fluctuations and long-term cyclical fluctuations. From the Fourier representation of $g(t)$ we split the whole set Ψ_P of non-zero frequencies into the mutually exclusive sets, that are related to those three periodic attributes of time series dynamics. Initially, we interpret long-term cyclical fluctuations as those with the length more than 8 years, since the frequency ω is related to the length of cycle that equals $2\pi/\omega$ units. In order to distinguish cyclical fluctuations from seasonal fluctuations we assume formally, that in the representation (10) the set $\Psi_P = \{\psi : m(\psi) \neq 0\} \subset [0, 2\pi)$, is unknown. For the set Ψ_P , let consider the following decomposition:

$$\Psi_P = \Psi_{P,1} \cup \Psi_{P,2} \cup \Psi_{P,3}. \quad (12)$$

We assume that $\Psi_{P,1} \cap (0, 0.35) = \Psi_{P,1}$, and consequently the set $\Psi_{P,1}$ represent all frequencies with corresponding length of the cycle greater than 17 months. Therefore the set $\Psi_{P,1}$ contains frequencies that can describe business fluctuations. The set $\Psi_{P,2}$ contains only seasonal frequencies, namely $\Psi_{P,2} \subset \{2k\pi/12 : k = 0, 1, \dots, 11\}$ while $\Psi_{P,3}$ contains all remained frequencies. In the following section we concentrate our attention only to parameter identification and estimation in the set $\Psi_{P,1}$.

5.2 Cycle identification and estimation

Our approach aims at identification and estimation of cyclical fluctuations. In order to remove trend component and to weaken seasonal effects, observed time series is subject to some preliminary transformations, . Hence, we formulate the algorithm of frequency identification that consists of three basic steps. The first step enables to remove seasonal component, the second step detects the trend component, while in the third step, parameter identification and estimation is provided.

Step 1 - removing the seasonal component. Seasonality appear in most monthly economic time series. More formally, we allow (it is assumed), that $\Psi_P \cap \{2k\pi/12 : k = 1, 2, \dots, 11\} \neq \emptyset$. Since, the estimation of the frequencies and corresponding Fourier coefficients, that represent seasonal frequencies is not of particular importance in our paper, we use centered moving average filter $2 \times 12\text{MA}$ (see: Makridakis et al. (1998), Brockwell and Davis (2002)) to remove seasonal pattern. We show below that this filter does not change the elements of the set $\Psi_{P,1}$, what is crucial for future estimation procedure. Denote by $\{Y_t : t \in \mathbb{Z}\}$ time series obtained by application of the centered moving average filter. It means, that $Y_t = L_{2 \times 12}(B)P_t$, where

$$L_{2 \times 12}(B) = (B^{-6} + 2B^{-5} + \dots + 2B^{-1} + 2 + 2B + \dots + 2B^5 + B^6)/24,$$

and $B^k P_t = P_{t-k}$ for any t and k . Note that the expectation of the time series $\{Y_t : t \in \mathbb{Z}\}$ exists. On the basis of the Theorem 8.1 and elementary calculations we get

$$\mu_Y(t) = E(Y_t) = \underbrace{\tilde{\beta}_0 + \tilde{\beta}_1 t + \dots + \tilde{\beta}_p t^p}_{\tilde{f}(t, \tilde{\beta})} + \sum_{\psi \in \Psi_Y} m_Y(\psi) e^{i\psi t}, \quad (13)$$

where $\Psi_Y \cap \{2k\pi/12 : k = 1, 2, \dots, 11\} = \emptyset$, $\Psi_Y = \Psi_P \setminus \{2k\pi/12 : k = 1, 2, \dots, 11\}$ and \tilde{f} is a function. Fourier coefficients $m_P(\psi)$ and $m_Y(\psi)$ are related according to the formula:

$$m_Y(\psi) = L_{2 \times 12}(e^{-i\psi}) m_P(\psi). \quad (14)$$

Notice that $\tilde{f}(t, \tilde{\beta})$ is also a polynomial of order p . In particular, for $s \in \{p-1, p\}$ we have $\tilde{\beta}_s = \beta_s$. Consequently, given model with $p = 0$ or $p = 1$ (i.e. constant or linear trend) we have, that $\tilde{f}(t, \tilde{\beta}) \equiv f(t, \beta)$. In case $p = 2$ functions \tilde{f} and f have different values, but $\tilde{f}(t, \tilde{\beta}) - f(t, \beta)$ is constant over time. Additionally, filtering the series with centered moving average operator, we obtain, that:

$$\Psi_Y \cap (0, 0.35) = \Psi_{P,1}$$

and

$$\Psi_Y \cap \Psi_{P,2} = \emptyset,$$

which means that the set Ψ_Y still contains the same elements as $\Psi_{P,1}$ and does not contain seasonal frequencies from the set $\Psi_{P,2}$.

Step 2 - removing the trend component. The case when $p = 0$ is trivial. Let consider the case $p = 1$. Application of difference operator $L_1(B) = (1 - B)$ for the time series $\{Y_t : t \in \mathbb{Z}\}$ results with time series $\{X_t : t \in \mathbb{Z}\}$:

$$X_t = L_1(B)Y_t = Y_t - Y_{t-1} = (P_{t+6} - P_{t-5} + P_{t+5} - P_{t-6})/24.$$

The expectation of the time series $\{X_t : t \in \mathbb{Z}\}$ exists and is described by almost periodic function of the form:

$$\mu_X(t) = \beta_1 + \sum_{\psi \in \Psi_X} m_X(\psi) e^{i\psi t}, \quad (15)$$

where

$$\Psi_X \subset \{0\} \cup \Psi_P \setminus \{2k\pi/12 : k = 1, 2, \dots, 11\}, \quad (16)$$

and

$$\Psi_X \cap (0, 0.35) = \Psi_{P,1}, \quad (17)$$

which follows from the Theorem 8.1. Additionally, we have:

$$m_X(\psi) = L_1(e^{-i\psi})m_Y(\psi) = L_1(e^{-i\psi})L_{2 \times 12}(e^{-i\psi})m_P(\psi). \quad (18)$$

and the Assumption 8.1 holds.

In the general case, when $p \in \mathbb{N}$ we use natural operator $L_p(B) = (1 - B)^p$. The resulting time series $\{X_t : t \in \mathbb{Z}\}$ can be represented by the following transformation of Y_t :

$$X_t = (1 - B)^p Y_t,$$

and hence, the expectation of X_t takes the form:

$$E(X_t) = \mu_X(t) = p! \beta_p + \sum_{\psi \in \Psi_X} m_X(\psi) e^{i\psi t}, \quad (19)$$

where, according to the Theorem 8.1:

$$m_X(\psi) = L_p(e^{-i\psi})m_Y(\psi) = L_p(e^{-i\psi})L_{2 \times 12}(e^{-i\psi})m_P(\psi). \quad (20)$$

By estimation $|L_p(e^{-i\psi})L_{2 \times 12}(e^{-i\psi})| > 0$, which is true for any $p \in \mathbb{N}$ and $\psi \in (0, 0.35)$, we have:

$$\Psi_X \cap (0, 0.35) = \Psi_{P,1}. \quad (21)$$

Therefore the problem of parameter identification and estimation in the set $\Psi_{P,1}$ reduce to the problem of parameter identification and estimation in the set $\Psi_X \cap (0, 0.35)$.

Step 3 - parameter identification and estimation. The formula (21) is crucial in the algorithm of parameter identification and estimation in the set $\Psi_{P,1}$. Initially, in Step 3 we formulate the additional assumption that the autocovariance function of time series $\{X_t : t \in \mathbb{Z}\}$ exists and it is almost periodic function. Notice, that the weaker assumption concerning periodic structure of autocovariance function appears in the literature concerning analysis of economic time series; see for example: Parzen and Pagano (1979), Osborn and Smith (1989), Franses and Boswijk (1996), Franses (1996), Franses and Ooms (1997), Franses and Dijk (2005). We use statistics $\tilde{\Pi}_n(\{\psi\}) = \sqrt{n}|\hat{r}_n(\psi)|$ and corresponding critical value $\tilde{c}_{n,b}(0.99\%)$ for the series generated from the previous steps of the algorithm. The test statistics $\tilde{\Pi}_n(\{\psi\})$ can be interpreted as a value of test statistics $\Pi_n(\{\psi\}) = \sqrt{n}|\hat{m}_n(\psi)|$ based on the sample $\{X_1 - \bar{\mathbf{X}}_n, X_2 - \bar{\mathbf{X}}_n, \dots, X_n - \bar{\mathbf{X}}_n\}$, where $\bar{\mathbf{X}}_n$ is the sample mean for the path $\{X_1, X_2, \dots, X_n\}$. The critical value is calculated according to the formula that utilises subsampling procedure presented in Politis et al. (1999):

$$\tilde{g}_{n,b}^{\{\psi\}}(1 - \alpha) = \inf\{x : \tilde{G}_{n,b}^{\{\psi\}}(x) \geq 1 - \alpha\},$$

where

$$\tilde{G}_{n,b}^{\{\psi\}}(x) = \frac{1}{n - b + 1} \sum_{t=1}^{n-b+1} \mathbf{1}\{\sqrt{b}|\hat{r}_n^{t-1,b}(\psi)| \leq x\}.$$

We fix $b = 2.5\sqrt{n}$ and we calculate test statistics and corresponding critical value for ψ from the discrete set of frequencies on the interval $(0, 0.35)$. If the value of test statistics is greater than the critical value on some subinterval $I \subset (0, 0.35)$ we take this subinterval as the interval containing some elements of the set $\Psi_{P,1}$. Next, we estimate the frequency connected with subinterval I using (6). By plug in technique we estimate amplitude related to each identified frequency in almost periodic part of the mean function of the process $\{P_t : t \in \mathbb{Z}\}$.

In our algorithm step 3 is fundamental in procedure of extraction business cycle component from the observed time series. Its main advantage is, that the frequencies describing the cyclical dynamics of economic activity are subject to formal statistical inference. This clearly distinguishes our approach from many other procedures presented in the literature, where the lack of statistical uncertainty in the procedure is very common and forces *ad-hoc* approach; see for example polemics concerning detrending in Canova (1998) and Burnside (1998).

However, it is very important, that the procedure yields only statistically significant frequencies, and extraction of the business cycle is subject to additional filtering. In the empirical part of the paper we use the Hodrick-Prescott (HP) filter (see Hodrick and

Prescott (1997)), with smoothness parameter λ . According to Gómez (1999), Gómez (2001), Maravall and del Río (2001) parameter λ can be described as the argument of frequency ψ_0 :

$$\lambda = \frac{1}{4(1 - \cos(\psi_0))^2}, \quad (22)$$

where $2\pi/\psi_0$ can be interpreted as a length of the cycle. Hence, on the basis of our procedure, it is possible to choose appropriate parameter λ of the HP filter, restricting spectrum only to significant parameters in the set $\Psi_{P,1}$. Alternatively it is possible to apply any filter in cycle extraction. We choose the simplest HP filter for illustrative purposes.

6 Empirical illustration

In this part of the paper we analyse cyclical behaviour of production sector in Poland. In particular we apply our model and three step procedure in order to characterise business cycles in industrial production index and some subsector indices.

Figure 1 (a) presents time series of industrial production index¹ in Poland from January 1995 to December 2009 (2005 year = 100%). This index contains: mining and quarrying; manufacturing; electricity, gas, steam and air conditioning supply. In the first step we applied centered moving average filter $2 \times 12MA$ to eliminate strong seasonal effects. The results of filtering is plotted on the Figure 1 (b). It is clear, that centered moving average filter removes the seasonal effects and also business fluctuations are clearly observable (see Figure 1 (b)).

According to our algorithm, presented in previous sections, we present in Figure 2 (a) first differences of the centered moving average filter applied for industrial production index. We see some evidence about the existence of cyclical behavior in time series under consideration. The amplitude of cycle does not seem to be constant over time. Also, the amplitude is smaller in period 1995-2001, while after year 2001 is characterized by greater variability. Therefore we use logarithm transformation for industrial production index to stabilize the amplitude. Figure 2 (b) presents the first difference of centered moving average filter applied for logarithm of industrial production index. It is easy to see that the amplitude is more constant over time then before logarithm transformation.

Figure 3 presents plots of the values of the test statistics $\tilde{\Pi}_n(\{\psi\}) = \sqrt{n}|\hat{r}_n(\psi)|$ with corresponding critical value $\tilde{c}_{n,b}(0.99\%)$. The test statistics exceeds the critical value in three subsets on the interval $(0, 0.35)$. Hence, taking care only of significant values of test statistic on the Figure 3 and in zoom on Figure 4, we assume that:

$$\Psi_{P,1} \cap (0, 0.35) = \{\psi_1, \psi_2, \psi_3\}. \quad (23)$$

The values of estimated frequencies from the set $\Psi_{P,1}$ were calculated according to (6). These values with corresponding length of the cycle can be found in Table 1.

Estimated amplitude of the cycle with corresponding length 8.5 and 3.4 years equal 0.13 and 0.07 respectively. This second amplitude dominates the estimated value of amplitude with corresponding length 2 years. We see, that 8.5-year length of the cycle received data support. However we can not formally interpret such fluctuations as a long-term growth trend or business fluctuations. We should rather look at this fluctuations as a mixture of both long-term growth trend and business fluctuations.

¹Source: Eurostat.

Consequently and unquestionable, the dataset support fluctuations with corresponding length 3.4 years as a basic characteristic of business cycle in industrial production in Poland. To confirm this statement we extract cyclical fluctuations from industrial production index (filtered by centered moving average filter $2 \times 12MA$) with the use of HP filter condition to the values of parameter λ fixed for $\lambda = 5\,500$, $\lambda = 12\,000$, $\lambda = 32\,000$, $\lambda = 55\,000$. The results are plotted on Figure 5. By restricting parameter λ to values stated above, according to the formula 22, we extract fluctuations with the length not greater than 4.5, 5.5, 7 and 8 years respectively. Since our goal was to extract only business fluctuations without significant influence of long-term growth trend, we restrict filtering only to fluctuations with corresponding length shorter than 8 years.

Analysing plots presented on Figure 5 it is possible to confirm the presence of cycles in industrial production in Poland with estimated length in the interval 3-4 years (during the period 1995 - 2009). In Table 2 we determined the periods of recessions and expansions in industrial production. We interpret turning points as margins of this periods. In most cases the recession is shorter than expansion. Consequently, our analysis confirm results discussed in the literature, that business cycle in industrial production for Poland display asymmetric behaviour. Also, the business cycle *troughs* are rather sharper than *peaks*, which is also typical for business cycles; see Hicks (1950), Milas et al. (2006).

In the next step we provide a more detailed analysis based on a formal identification of business cycles in sectors and subsectors of industrial production in Poland. We use the same statistical tools as for the total industrial production index. We considered all categories identified for industrial production. The set of all modelled indices are presented in Table 3.

Figure 6 presents plots of logarithms of all considered indices. Repeating the procedure, initially applied for the total index, we use centered moving average filter $2 \times 12MA$ to remove seasonal effect from the data sets (see Figure 7). First differences are presented on the Figure 8. It is clear, that majority of indices exemplify cyclical pattern, just like in the case of index of total production, but with rather differential amplitudes and length.

To identify frequencies in the unknown set $\Psi_{P,1}$ we applied again the test statistic $\tilde{\Pi}_n(\{\psi\}) = \sqrt{n}|\hat{r}_n(\psi)|$ and corresponding critical value $\tilde{c}_{n,b}^{\{\psi\}}(\alpha)$. The results are presented on the Figure 9, where we plotted estimated lengths of the cycles together with appropriate estimated amplitude. In different sectors and subsectors of industrial production the data provide evidence in favour of cycles with length in the interval 1.5-3 years. However, those cycles are characterized by much shorter estimated amplitude

than the cycles with length in the interval 3-4 years. The cycles with estimated length in the interval 3-4 years were supported in predominant set of subindices. Only in the case of manufacture, food products and beverages (C10_C11), manufacture of basic pharmaceutical products and pharmaceutical preparations (C21) and electricity, gas, steam and air conditioning supply (D).

We see, that the largest estimated amplitude characterize cycles with the corresponding length of more than 4 years. But only in a few cases the cycles with length 5-8 years were supported. It can be seen clearly on the Figure 11, where the comparison of all identified cycles for all 32 indices is presented. In spite of the fact, that observed time series were subject to filtering with the use of centered moving average filter $2 \times 12MA$, all investigated subindices provide data support in favour of the existence of cycles with length not greater than two years. However, as seen on Figure 11, those short cycles are characterized by amplitudes with values located relatively close to zero, as compared with longer significant cycles. This makes such a short term periodic pattern not extremely important in describing cyclical behaviour of modelled time series. Additionally, all indices support cycles of length 3-4 years, with relatively greater value of corresponding amplitudes as compared to characteristics of short term fluctuations. Also, except manufacture of wearing apparel (14-th index) we see no data support for cycles with length between 4 and 7 years. Consequently, for all considered subindices, the set of statistically significant cycles is clearly divided in two separate parts. The first set is constituted by short term cycles with small amplitudes together with middle term fluctuations, attributed in most cases by stronger amplitudes. The second set consists of frequencies, describing long term cycle, namely with length not less than 7 years. Just like in case of the total production index, we tend not to interpret those long term fluctuations as important characteristic of business cycle for Polish economy. According to our results, just like for the total index, all considered subindices are characterized by existence of the long term trend.

Using HP filter we extract business cycles from all industrial production indexes. Similar as for industrial production index - total we fix the parameter λ as $\lambda = 5\,500$, $\lambda = 12\,000$, $\lambda = 32\,000$, $\lambda = 55\,000$ (see Figure 12). The reasons why we chose those values of λ parameter are the following. Firstly, we fix the same parameter to compare results with those obtained for industrial production index. Secondly, the length of the cycle that is greater than 8 years is not clearly constant over different subindices and therefore we can not interpret those fluctuations as business fluctuations. Finally, we can notice that in the interval from 4 to 8 years there are only a few significant lengths of cycles and this should give rise to extract similar shape of business fluctuations for different values of parameter λ . Almost all extracted fluctuations reveal presence of

cycles with length in the interval 3-4 years. Summing up, the cycle with length in the range 3-4 years is typical and prevalent for cyclical fluctuations in industrial production in Poland.

7 Concluding remarks

In this paper a novel approach in business fluctuations analysis for one dimensional economic processes is proposed. Using theory of almost periodically correlated time series and subsampling procedure we consider a formal approach to estimate the length of business cycles. The main advantage of our approach is, that the business cycle characteristics are treated in formal way, and are subject to statistical inference. This clearly distinguishes presented framework from many filtering-based approaches, broadly considered in empirical applications. We model business fluctuations by parameters of discrete spectra of time series, under assumption that amplitude of this fluctuations is constant over time. Taking in consideration estimated length of the cycles we extract business fluctuations by HP filter for parameter of smoothness chosen on the basis of formal procedure.

The main conclusion presented in empirical illustration is that, during period 1995-2009, we confirm (using statistical tools) the presence of 3-4 years length of business cycle in industrial production index in Poland. This result was obtained either on the basis of the total index and also analysing subindices. This result confirms analyses conducted so far on the basis of Polish macroeconomic time series; see Gradzewicz et al. (2010), Adamowicz et al. (2008), Skrzypczyński (2008) and Skrzypczyński (2006).

All indices and subindices supported significance of short term and middle term fluctuations, attaching relatively small amplitudes for periodicity with length less than 2 years. Additionally, in all time series we detected existence of longer term cycle (7-8 years), interpreted in this paper as a trend or a mixture of both trend and business cycle fluctuations.

8 Appendix

Assumption 8.1. Let $\{X_t : t \in \mathbb{Z}\}$ be APC time series such that for any $x \in [0, 2\pi)$ there exists a constant $B(x)$ (which depends only on x), such that we have estimation

$$\sum_{\psi \in \Psi \setminus \{x\}} \left| m(\psi) \operatorname{cosec} \left(\frac{\psi - x}{2} \right) \right| < B(x) < \infty, \quad (24)$$

Theorem 8.1. Let $\{X_t : t \in \mathbb{N}\}$ be a time series for which the expectation function exists and it is almost periodic function of the form $\mu_X(t) = E(X_t) = \sum_{\psi \in \Psi_X} m_X(\psi) e^{i\psi t}$. We assume that for the set Ψ and corresponding Fourier coefficients $m(\cdot)$ the Assumption 8.1 holds. Let $L(B) = \sum_{j=-p}^q a_j B^j$ be a linear filter, where $p, q \geq 0$, $\{a_j\}_{j=-p}^q$ is a sequence of real numbers, and $B^j X_t = X_{t-j}$ for any $j \in \mathbb{Z}$. Then

$$E(Y_t) = \mu_Y(t) = \sum_{\psi \in \Psi_Y} m_Y(\psi) e^{i\psi t},$$

where $\Psi_Y = \Psi_X$ and $m_Y(\psi) = L(e^{-i\psi}) m_X(\psi)$. Additionally, assumption 8.1 holds for the set Ψ_Y and corresponding coefficients $m_Y(\cdot)$.

Proof. Notice that

$$\begin{aligned} E(Y_t) &= E \left(\sum_{j=p_1}^{p_2} a_j B^j X_t \right) = E \left(\sum_{j=p_1}^{p_2} a_j X_{t-j} \right) \\ &= \sum_{j=p_1}^{p_2} a_j \sum_{\psi \in \Psi_X} m_X(\psi) e^{i\psi(t-j)} = \sum_{\psi \in \Psi_X} m_X(\psi) \sum_{j=p_1}^{p_2} a_j e^{-i\psi j} e^{i\psi t} = \\ &= \sum_{\psi \in \Psi_X} m_X(\psi) L(e^{-i\psi}) e^{i\psi t}. \end{aligned} \quad (25)$$

By estimation $|m_Y(\psi)| \leq |m_X(\psi)| \sum_{j=p_1}^{p_2} |a_j|$ we conclude that condition 1.1 from Lenart (2011b) holds for the set Ψ_Y and corresponding Fourier coefficients $m_Y(\cdot)$. \square

Theorem 8.2. Take any $\psi \in (0, 2\pi)$. Let the assumptions of Theorem 2.2 in Lenart (2011b) hold. Then

- (i) $\tilde{L}_{n,b}^{\{\psi\}}(x) \xrightarrow{P} J^{\{\psi\}}(x)$, for any $x \in \mathbb{R}$,
- (ii) $\sup_{x \in \mathbb{R}} |\tilde{L}_{n,b}^{\{\psi\}}(x) - J^{\{\psi\}}(x)| \xrightarrow{P} 0$,
- (iii) subsampling confidence intervals for the parameter $|m(\psi)|$ are asymptotically consistent, which means that

$$P \left(\sqrt{n} (|\hat{r}_n(\psi)| - |m(\psi)|) \leq \tilde{c}_{n,b}^{\{\psi\}} (1 - \alpha) \right) \longrightarrow 1 - \alpha, \quad (26)$$

where $b = b(n) \rightarrow \infty$ and $b/n \rightarrow 0$.

Proof of the Theorem 8.2. In this proof we use the same steps as in Theorem 4.2.1, page 103 in Politis et al. (1999). Let $q = n - b + 1$, $\tau_n = \sqrt{n}$ and

$$U_n(x) = \frac{1}{q} \sum_{t=1}^q \mathbf{1}\{\tau_b(|\hat{m}_n^{t-1,b}(\psi)| - |m(\psi)|) \leq x\}.$$

Notice, that

$$\begin{aligned} \tilde{L}_{n,b}^{\{\psi\}}(x) &= \frac{1}{q} \sum_{t=1}^q \mathbf{1}\{\tau_b[|\hat{m}_n^{t-1,b}(\psi)| - |m(\psi)|] + \tau_b[(|m(\psi)| - |\hat{r}_n(\psi)|) + \\ &\quad + (|\hat{r}_n^{t-1,b}(\psi)| - |\hat{m}_n^{t-1,b}(\psi)|)] \leq x\}. \end{aligned}$$

We need the following lemma.

Lemma 8.1. For any real x and $\epsilon > 0$ we have estimation

$$U_n(x - \epsilon) \mathbf{1}\{E_n\} \leq \tilde{L}_{n,b}^{\{\psi\}}(x) \mathbf{1}\{E_n\} \leq U_n(x + \epsilon), \quad (27)$$

where $E_n = \{\tau_b \max_{1 \leq t \leq q} (|m(\psi)| - |\hat{r}_n(\psi)|) + (|\hat{r}_n^{t-1,b}(\psi)| - |\hat{m}_n^{t-1,b}(\psi)|) \leq \epsilon\}$.

Proof. Let consider two cases:

1° $\mathbf{1}\{E_n\} = 0$, inequality (27) holds

2° $\mathbf{1}\{E_n\} = 1$, then

$$\tau_b \max_{1 \leq t \leq q} (|m(\psi)| - |\hat{r}_n(\psi)|) + (|\hat{r}_n^{t-1,b}(\psi)| - |\hat{m}_n^{t-1,b}(\psi)|) \leq \epsilon,$$

which means that for any $1 \leq t \leq q$

$$\eta_n^{t-1,b}(\psi) := \tau_b (|m(\psi)| - |\hat{r}_n(\psi)|) + (|\hat{r}_n^{t-1,b}(\psi)| - |\hat{m}_n^{t-1,b}(\psi)|) \in [-\epsilon, \epsilon].$$

Using next inequality $x - \eta_n^{t-1,b}(\psi) \geq x - \epsilon$, which is true for any $1 \leq t \leq q$ we get

$$\begin{aligned} &\mathbf{1}\{\tau_b[|\hat{m}_n^{t-1,b}(\psi)| - |m(\psi)|] + \tau_b[(|m(\psi)| - |\hat{r}_n(\psi)|) + \\ &\quad + (|\hat{r}_n^{t-1,b}(\psi)| - |\hat{m}_n^{t-1,b}(\psi)|)] \leq x\} \\ &= \mathbf{1}\{\tau_b[|\hat{m}_n^{t-1,b}(\psi)| - |m(\psi)|] \leq x - \eta_n^{t-1,b}(\psi)\} \geq \\ &\geq \mathbf{1}\{\tau_b[|\hat{m}_n^{t-1,b}(\psi)| - |m(\psi)|] \leq x - \epsilon\}. \end{aligned} \quad (28)$$

Analogically, using inequality $x - \eta_n^{t-1,b}(\psi) \leq x + \epsilon$ we get

$$\begin{aligned} &\mathbf{1}\{\tau_b[|\hat{m}_n^{t-1,b}(\psi)| - |m(\psi)|] + \tau_b[(|m(\psi)| - |\hat{r}_n(\psi)|) + \\ &\quad + (|\hat{r}_n^{t-1,b}(\psi)| - |\hat{m}_n^{t-1,b}(\psi)|)] \leq x\} = \\ &= \mathbf{1}\{\tau_b[|\hat{m}_n^{t-1,b}(\psi)| - |m(\psi)|] \leq x - \eta_n^{t-1,b}(\psi)\} \leq \\ &\leq \mathbf{1}\{\tau_b[|\hat{m}_n^{t-1,b}(\psi)| - |m(\psi)|] \leq x + \epsilon\}. \end{aligned} \quad (29)$$

Summing inequality (28), (29) dla $t = 1, 2, \dots, q$ we get (27). This completes the proof of lemma. \square

In next step we show that $P(E_n) \rightarrow 0$. Using inequality $||z_1| - |z_2|| \leq |z_1 - z_2|$ (which is true for any complex numbers z_1, z_2) and inequality $|\sum_{j=p}^q c_j e^{ijx}| \leq c_p |\operatorname{cosec}(x/2)|$, (which is true for any $x \not\equiv 0$ modulo 2π and real numbers $c_p \geq c_{p+1} \geq \dots \geq c_q$) we have

$$\begin{aligned}
\max_{1 \leq t \leq q} |\eta_n^{t-1, b}(\psi)| &\leq \max_{1 \leq t \leq q} \tau_b |m(\psi) - \hat{r}_n(\psi)| + \max_{1 \leq t \leq q} \tau_b |\hat{r}_n^{t-1, b}(\psi) - \hat{m}_n^{t-1, b}(\psi)| \\
&\leq \tau_b |m(\psi) - \hat{r}_n(\psi)| + \max_{1 \leq t \leq q} \tau_b |\hat{r}_n^{t-1, b}(\psi) - \hat{m}_n^{t-1, b}(\psi)| \\
&\leq \tau_b |m(\psi) - \hat{r}_n(\psi)| + \frac{\tau_b}{b} |\bar{\mathbf{X}}_n| |\operatorname{cosec}(\psi/2)| \\
&\leq \tau_b |m(\psi) - \hat{m}_n(\psi)| + \tau_b |\hat{m}_n(\psi) - \hat{r}_n(\psi)| + \frac{\tau_b}{b} |\bar{\mathbf{X}}_n| |\operatorname{cosec}(\psi/2)| \\
&\leq \tau_b |m(\psi) - \hat{m}_n(\psi)| + \frac{\tau_b}{n} |\bar{\mathbf{X}}_n| |\operatorname{cosec}(\psi/2)| + \frac{\tau_b}{b} |\bar{\mathbf{X}}_n| |\operatorname{cosec}(\psi/2)|
\end{aligned} \tag{30}$$

By convergence $\tau_b |m(\psi) - \hat{m}_n(\psi)| \xrightarrow{p} 0$ and $\frac{\tau_b}{b} |\bar{\mathbf{X}}_n| \xrightarrow{p} 0$ we get

$$\max_{1 \leq t \leq q} |\eta_n^{t-1, b}(\psi)| \xrightarrow{p} 0,$$

which means that $P(E_n) \rightarrow 1$. Using next Slutskys Lemma and Theorem 2.1 in Lenart (2011b) we have $\sqrt{n}(|r_n^{t-1, b}(\psi)| - |m(\psi)|) \xrightarrow{d} J^{\{\psi\}}$. To finish the proof it is sufficient to follows next steps in Theorem 4.2.1, page 103 in Politis et al. (1999), therefore we omit them. \square

References

- E. Adamowicz, S. Dudek, D. Pachucki, and E. Walczyk. *Synchronizacja cyklu koniunkturalnego polskiej gospodarki z krajami strefy euro w kontekście struktury tych gospodarek*. Instytut Rozwoju Gospodarczego, Szkoa Gwna Handlowa, Warszawa, 2008.
- S. Beveridge and C.R. Nelson. A new approach to decomposition of economic time series into permanent and transitory components with particular attention to measurement of the business cycle. *Journal of Monetary Economics*, 7(2):151–174, 1981.
- P. Bloomfield, H. Hurd, and R. Lund. Periodic correlation in stratospheric ozone time series. *J. Time Ser. Anal*, 15(2):127–150, 1994.
- T. Bollerslev and E. Ghysels. Periodic autoregressive conditional heteroscedasticity. *Journal of Business and Economic Statistics*, 14(2):139–152, 1996.

- P.J. Brockwell and R.A. Davis. *Introduction to Time Series and Forecasting*. Springer-Verlag, New York, 2002.
- C. Burnside. Detrending and business cycle facts: A coment. *Journal of Monetary Economics*, 41:513–532, 1998.
- P. Burridge and A.M. Taylor. On regression-based tests for seasonal unit roots in the presence of periodic heteroscedasticity. *Journal of Econometrics*, 104:91117, 2001.
- F. Canova. Detrending and business cycle facts. *Journal of Monetary Economics*, 41: 475–512, 1998.
- P.K. Clark. The cyclical component of U.S. economic activity. *Quarterly Journal of Economics*, 102:797–814, 1987.
- C. Corduneanu. *Almost Periodic Functions*. Chelsea, New York, 1989.
- D. Dehay and H. Hurd. Representation and estimation for periodically and almost periodically correlated random processes. In: *W.A. Gardner (Ed.), Cyclostationarity in Communications and Signal Processing, IEEE Press*, pages 295–329, 1994.
- F.X. Diebold and G. Rudenbush. Measuring business cycles: A modern perspective. *Review of Economic and Statistics*, 78:67–77, 1996.
- P.H. Franses. *Stochastic Trends in Economic Time Series*. Oxford University Press, New York, 1996.
- P.H. Franses and H.P. Boswijk. Temporal aggregation in a periodically integrated autoregressive process. *Statistics and Probability Letters*, 30:235–240, 1996.
- P.H. Franses and D. Dijk. The forecasting performance of various models for seasonality and nonlinearity for quarterly industrial production. *International Journal of Forecasting*, 21:87–102, 2005.
- P.H. Franses and M. Ooms. A periodic long-memory model for quarterly UK inflation. *International Journal of Forecasting*, 13:117–126, 1997.
- W. A. Gardner. Measurement of spectral correlation. *Signal Processing*, 34 (5):1111–1123, 1986.
- W. A. Gardner, A. Napolitano, and L. Paura. Cyclostationarity: Half a century of research. *Signal Processing*, 86:639–697, 2006.
- E. G. Gladyshev. Periodically correlated random sequence. *Sov. Math.*, 2:385–388, 1961.
- V. Gómez. The use of butterworth filters for trend and cycle estimation in economic time series. *Journal of Business and Economic Statistics*, 19(3):365–373, 2001.
- V. Gómez. Three equivalent methods for filtering finite nonstationary time series. *Journal of Business and Economic Statistics*, 17(1):109–117, 1999.
- M. Gradzewicz, J. Growiec, J. Hagemeyer, and P. Popowski. Cykl koniunkturalny w polsce - wnioski z analizy spektralnej. *Bank i Kredyt*, 41:41–76, 2010.

- J.D. Hamilton. A new approach to the economic analysis of nonstationary time series and the business cycle. *Econometrica*, 57(2):357–384, 1989.
- A.C. Harvey and A. Jaeger. Detrending, stylized facts and the business cycle. *Journal of Applied Econometrics*, 8:231–247, 1993.
- J.R. Hicks. *A Contribution to the Theory of the Trade Cycle*. Clarendon Press, Oxford, 1950.
- R.J. Hodrick and E.C. Prescott. Postwar U.S. Business Cycles: An Empirical Investigation. *Journal of Money, Credit and Banking*, 29:1–16, 1997.
- H. Hurd. Correlation theory of almost periodically correlated processes. *J. Multivariate Anal.*, 37:24–45, 1991.
- H. Hurd. Representation of strongly harmonizable periodically correlated process and their covariances. *J. Multivariate Anal.*, 29:53–67, 1989.
- H.L. Hurd and A.G. Mianee. *Periodically Correlated Random Sequences: Spectral Theory and Practice*. Wiley, Hoboken, New Jersey, 2007.
- R.G. King and S.T. Rebelo. Resuscitating real business cycles. In: *J.B. Taylor, M. Woodford (Eds.), Handbook of Macroeconomics*, 1999.
- H-M. Krolzig. *Markov-Switching Vector Autoregressions, Modelling, Statistical Inference and Application to Business Cycle Analysis*. Springer-Verlag, Berlin, 1997.
- Ł. Lenart. Asymptotic distributions and subsampling in spectral analysis for almost periodically correlated time series. *Bernoulli*, 17(1):290–319, 2011a.
- Ł. Lenart. Non-parametric frequency identification and estimation in mean function for almost periodically correlated time series. *in preparation*, 2011b.
- Ł. Lenart, J. Leśkow, and R. Synowiecki. Subsampling in testing autocovariance for periodically correlated time series. *J. Time Ser. Anal.*, 29(6), 2008.
- R.E. Lucas. Understanding business cycles. In *Brunner, Karl and Meltzer, Allan H. (eds.), Stabilization of the Domestic and International Economy, Carnegie-Rochester Conference Series on Public Policy, no. 5. Reprinted in Kydland, Finn E. (ed.), Business Cycle Theory, Aldershot: Edward Elgar: pp. 85-107*, pages 85–107, 1977.
- S. Makridakis, S.C. Wheelwright, and R.J. Hyndman. *Forecasting: Methods and Applications*. Wiley, New York, 1998.
- A. Maravall and Ana del Río. Time aggregation and the Hodrick-Prescott filter. *Banco de España Servicio de Estudios Documento de Trabajo n.º 0108*, 2001.
- C. Milas, P.A. Rothman, and D. Dijk. *Nonlinear Time Series Analysis of Business Cycles*. Elsevier, Amsterdam, 2006.
- W.C. Mitchell. Business cycles as revealed by business annals. In: *W.L. Thorp (Ed.), Business Annals*, 1926.
- A. Napolitano and C.M. Spooner. Cyclic spectral analysis of continuous-phase modu-

- lated signals. *IEEE Trans. Signal Process.*, 49 (1):30–44, 2001.
- D. R. Osborn and J. P. Smith. The performance of periodic autoregressive models in forecasting seasonal U.K. consumption. *J Bus. Econ. Stat.*, 9:117–127, 1989.
- E. Parzen and M. Pagano. An approach to modeling seasonally stationary time-series. *J. Econometrics*, 9:137–153, 1979.
- D. Politis, J. Romano, and M. Wolf. *Subsampling*. Springer-Verlag, New York, 1999.
- M. B. Priestley. *Spectral Analysis and Time Series*. Academic Press, London, 1981.
- E. Serpedin, F. Panduru, I. Sari, and G. B. Giannakis. Bibliography on cyclostationarity. *Signal Processing*, 85:2233 – 2303, 2005.
- P. Skrzypczyński. Analiza synchronizacji cykli koniunkturalnych w strefie euro. *Materiały i Studia Narodowego Banku Polskiego*, Zeszyt nr 210, 2006.
- P. Skrzypczyński. Wahania aktywności gospodarczej w Polsce i strefie euro. *Materiały i Studia Narodowego Banku Polskiego*, Zeszyt nr 227, 2008.
- J.H. Stock and M.W. Watson. Business cycle fluctuations in us macroeconomic time series. In: *J.B. Taylor, M. Woodford (Eds.), Handbook of Macroeconomics*, 1999.
- A. M. Walker. On the estimation of a harmonic component in a time series with stationary independent residuals. *Biometrika*, 58(1):21–36, 1971.

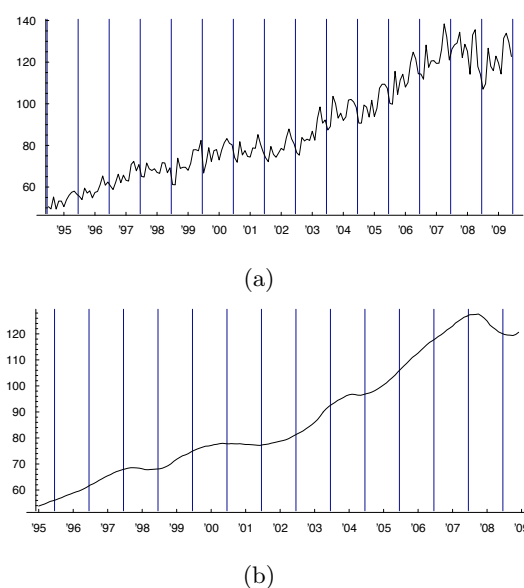


Fig. 1: (a) Industrial production index in Poland (2005 year = 100%) from January 1995 to December 2009; (b) Realization of centered moving average filter $2 \times 12MA$ applied for industrial production index in Poland.

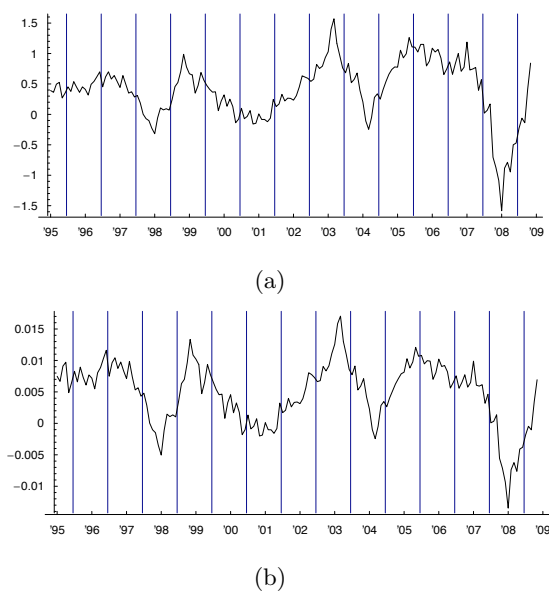


Fig. 2: (a) First difference of centered moving average filter $2 \times 12MA$ applied for industrial production index; (b) First difference of centered moving average filter $2 \times 12MA$ applied for logarithm of industrial production index.

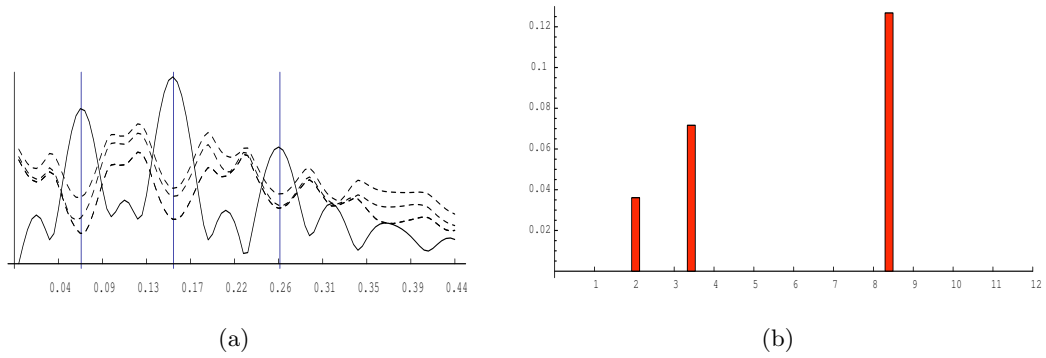


Fig. 4: Frequency identification (in the set $\Psi_{P,1}$) and corresponding amplitude estimation: (a) the value of test statistics $\tilde{\Pi}_n(\{\psi\}) = \sqrt{n}|\hat{r}_n(\psi)|$ (continuous line) and critical value $\tilde{c}_{n,b}^{(\psi)}(\alpha)$ (dashed line) for $\alpha \in \{92\%, 95\%, 99\%\}$ and ψ from the set $\{(k-1)\pi/720 : k = 1, 2, \dots, 100\}$; (b) estimated amplitude corresponding to estimated frequencies from the set $\Psi_{P,1}$: X - estimated length of the cycle, Y - estimated amplitude.

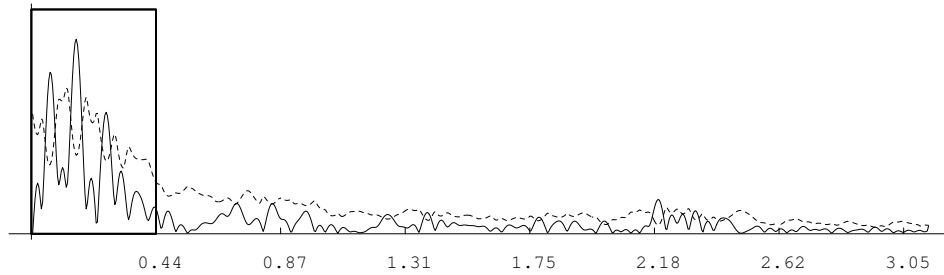


Fig. 3: Frequency identification using statistics $\tilde{\Pi}_n(\{\psi\}) = \sqrt{n}|\hat{r}_n(\psi)|$ and corresponding critical value $\tilde{c}_{n,b}(0.99\%)$ for the realization of time series $\{X_t : t \in \mathbb{Z}\}$: continuous line - the value of test statistics $\tilde{\Pi}_n(\{\psi\}) = \sqrt{n}|\hat{r}_n(\psi)|$ for ψ from the set $\{(k-1)\pi/720 : k = 1, 2, \dots, 720\}$; dashed line - critical value $\tilde{c}_{n,b}^{(\psi)}(99\%)$ for ψ from the set $\{(k-1)\pi/720 : k = 1, 2, \dots, 720\}$.

The value of frequency estimator	$\hat{\psi}_{n,1} = 0.062$	$\hat{\psi}_{n,2} = 0.153$	$\hat{\psi}_{n,3} = 0.258$
Corresponding length of the cycle (in years)	8.5	3.4	2

Tab. 1: Estimated frequencies with corresponding length of the cycle for industry production index in Poland.

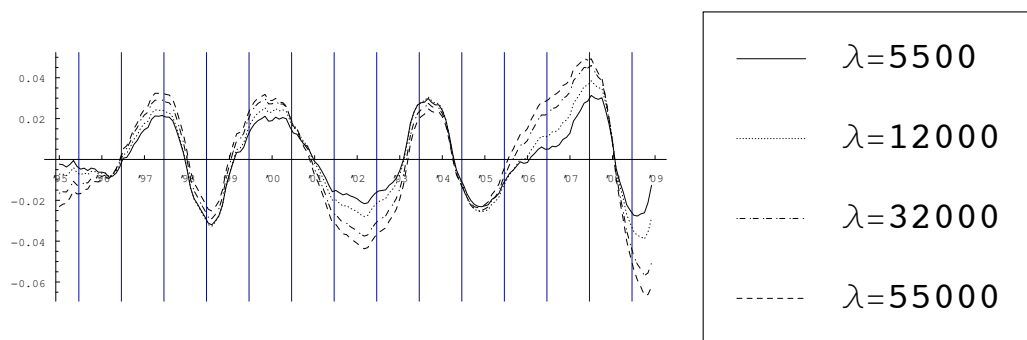


Fig. 5: Business cycle in industrial production after logarithm and application of centered moving average filter extracted by HP filter for $\lambda = 5500$ (continuous line) $\lambda = 12000$ (dotted line) $\lambda = 32000$ (dotted and dashed line) $\lambda = 55000$ (dashed line).

Expansion	... - Dec.97	Feb.99-May00	Sept.02-Mar.04	Jun.05-Jan.08	Apr.09-...
Recession	Dec.97-Feb.99	May00-Sept.02	Mar.04-Jun.05	Jan.08-Apr.09	

Tab. 2: Expansions and recessions in industrial production index in Poland in the period July 1995 - June 2009.

B-D_F	- Mining and quarrying; manufacturing; electricity, gas, steam and air conditioning supply; construction
MIG_ING_CAG	- MIG Intermediate and capital goods
MIG_ING	- MIG - MIG - Intermediate goods
MIG_CAG	- Capital goods
MIG_DCOG	- MIG - Durable consumer goods
MIG_NDCOG	- MIG - Non-durable consumer goods
B	- Mining and quarrying
C	- Manufacturing
C10-C12	- Manufacture of food products; beverages and tobacco products
C10_C11	- Manufacture of food products and beverages
C10	- Manufacture of food products
C11	- Manufacture of beverages
C12	- Manufacture of tobacco products
C13_C14	- Manufacture of textiles and wearing apparel
C15	- Manufacture of leather and related products
C16	- Manufacture of wood and of products of wood and cork, except furniture; manufacture of articles of straw and plaiting materials
C17	- Manufacture of paper and paper products
C18	- Printing and reproduction of recorded media
C19	- Manufacture of coke and refined petroleum products
C20	- Manufacture of chemicals and chemical products
C21	- Manufacture of basic pharmaceutical products and pharmaceutical preparations
C22	- Manufacture of rubber and plastic products
C23	- Manufacture of other non-metallic mineral products
C24	- Manufacture of basic metals
C25	- Manufacture of fabricated metal products, except machinery and equipment
C26	- Manufacture of computer, electronic and optical products
C27	- Manufacture of electrical equipment
C28	- Manufacture of machinery and equipment n.e.c.
C29	- Manufacture of motor vehicles, trailers and semi-trailers
C29_C30	- Manufacture of motor vehicles, trailers, semi-trailers and of other transport equipment
C31	- Manufacture of furniture; other manufacturing
D	- Electricity, gas, steam and air conditioning supply

Tab. 3: Categorised indices describing changes in economic activity in sectors and subsectors of industrial production in Poland

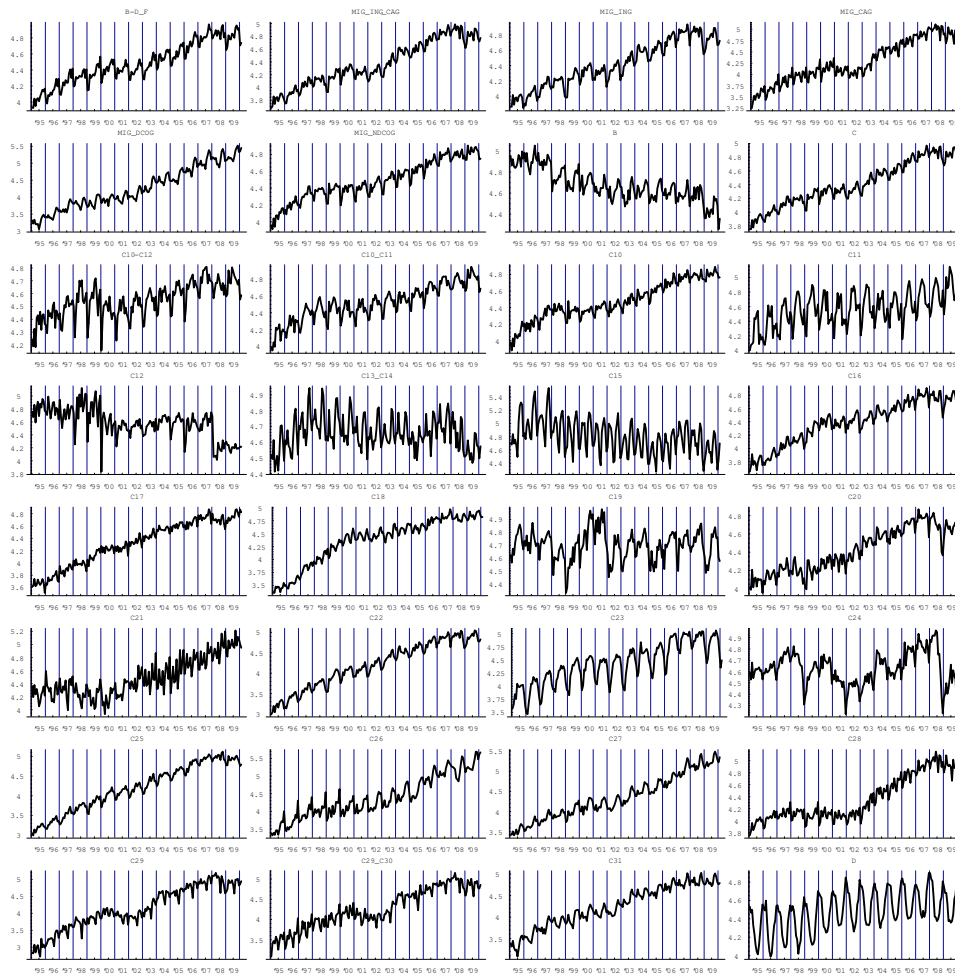


Fig. 6: Logarithm of industrial production indices in Poland (2005 rok = 100%) in sectors and subsectors from January 1995 to February 2010.

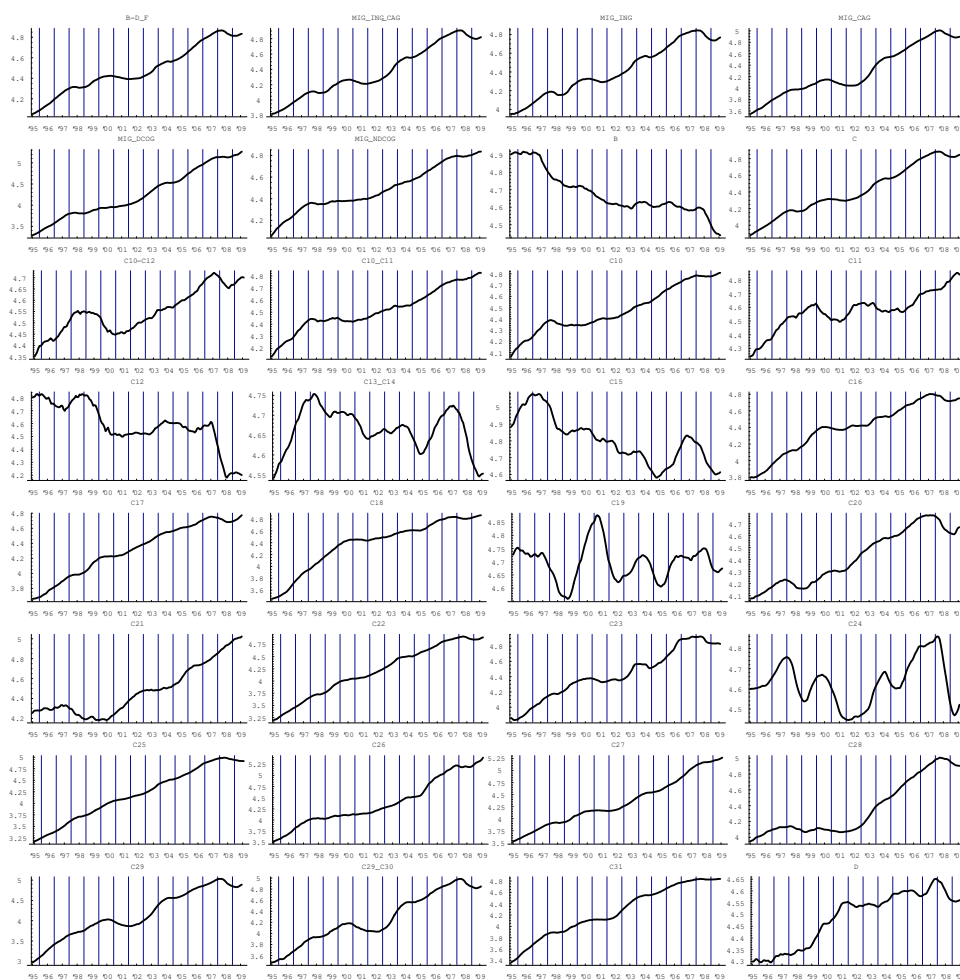


Fig. 7: Realizations of centered moving average filter $2 \times 12MA$ applied for logarithm of industrial production indexes in Poland in sectors and subsectors.

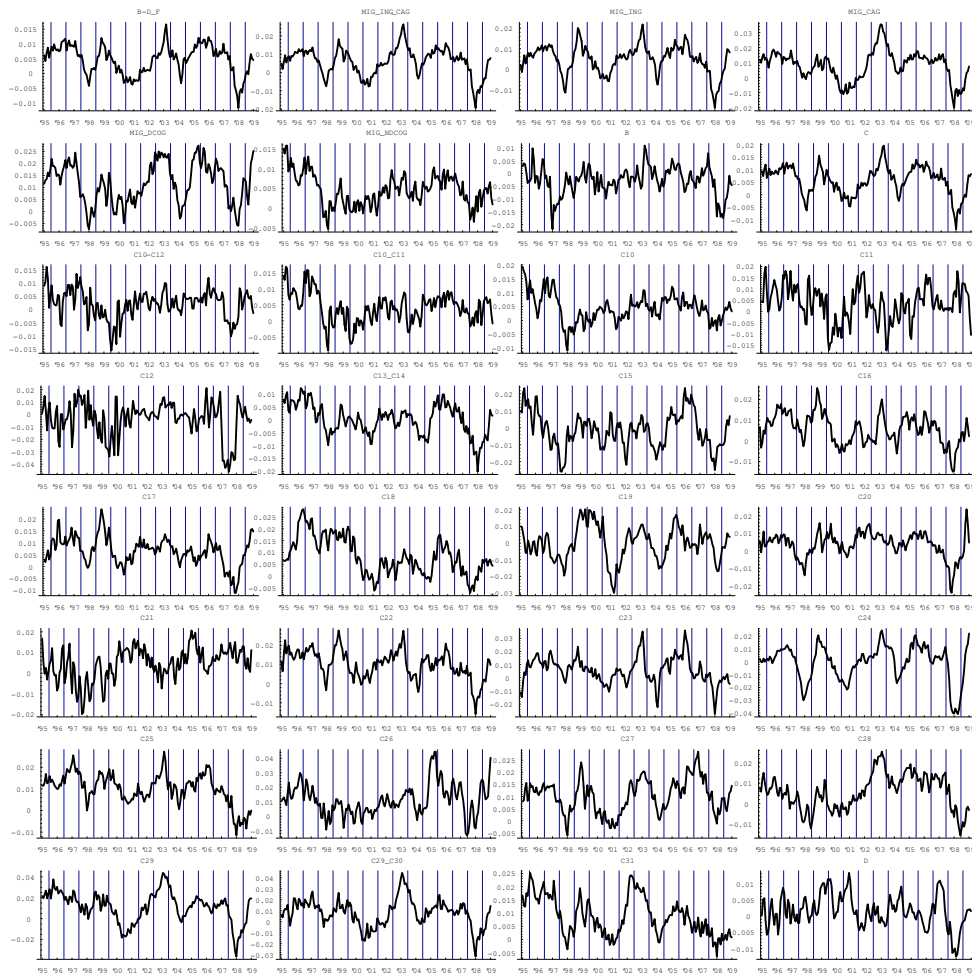


Fig. 8: First difference for realization of centered moving average filter $2 \times 12MA$ applied for logarithm of industrial production indexes in sectors and subsectors.

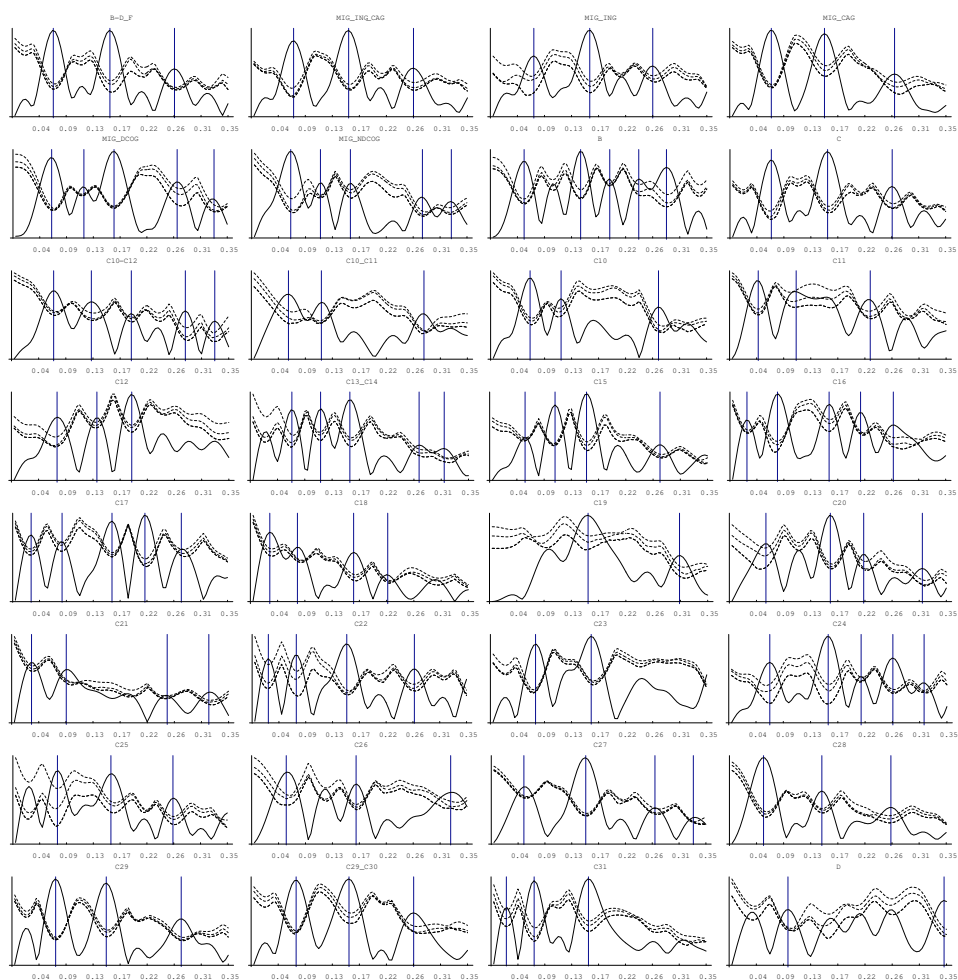


Fig. 9: Frequency identification (in the set $\Psi_{P,1}$): continuous line - the value of test statistics $\tilde{\Pi}_n(\{\psi\}) = \sqrt{n}|\hat{r}_n(\psi)|$, dashed line - critical value $\tilde{c}_{n,b}^{\{\psi\}}(\alpha)$ for $\alpha \in \{92\%, 95\%, 99\%\}$ and ψ from the set $\{(k-1)\pi/720 : k = 1, 2, \dots, 100\}$.

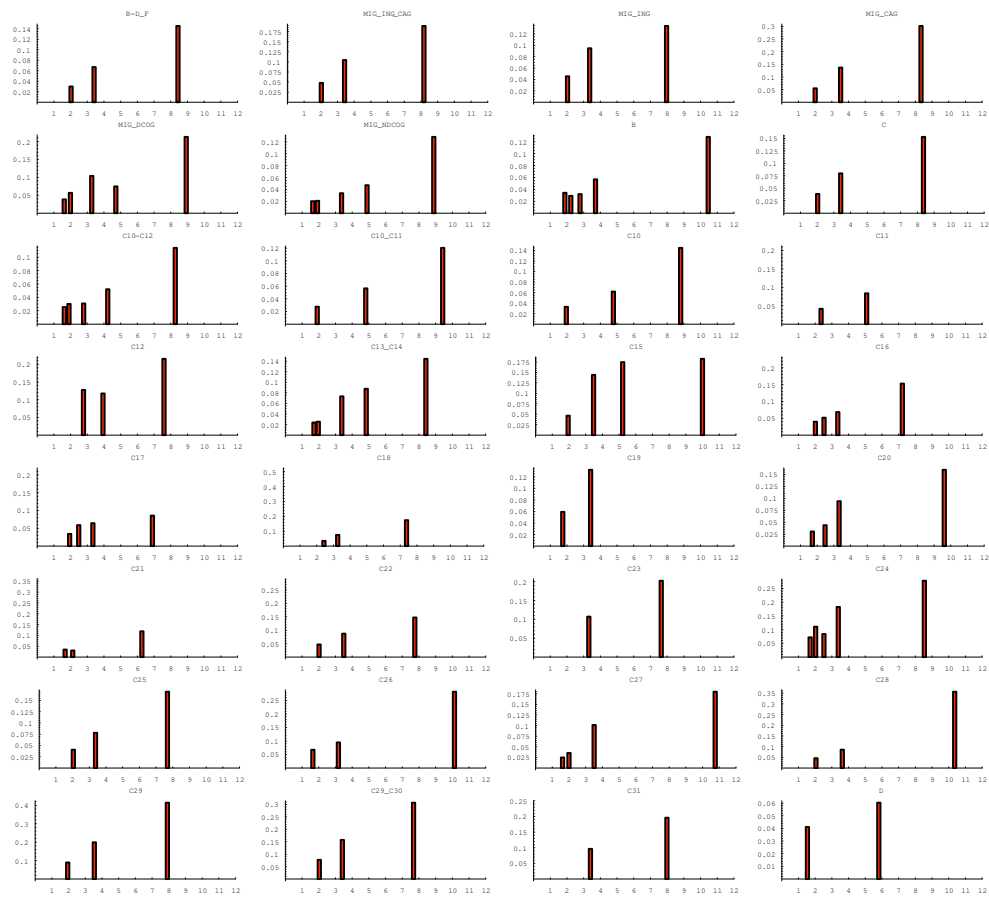


Fig. 10: Estimated amplitude and estimated length of the cycles connected with identified frequencies in the set $\Psi_{P,1}$: X - estimated length of the cycle, Y - estimated amplitude.

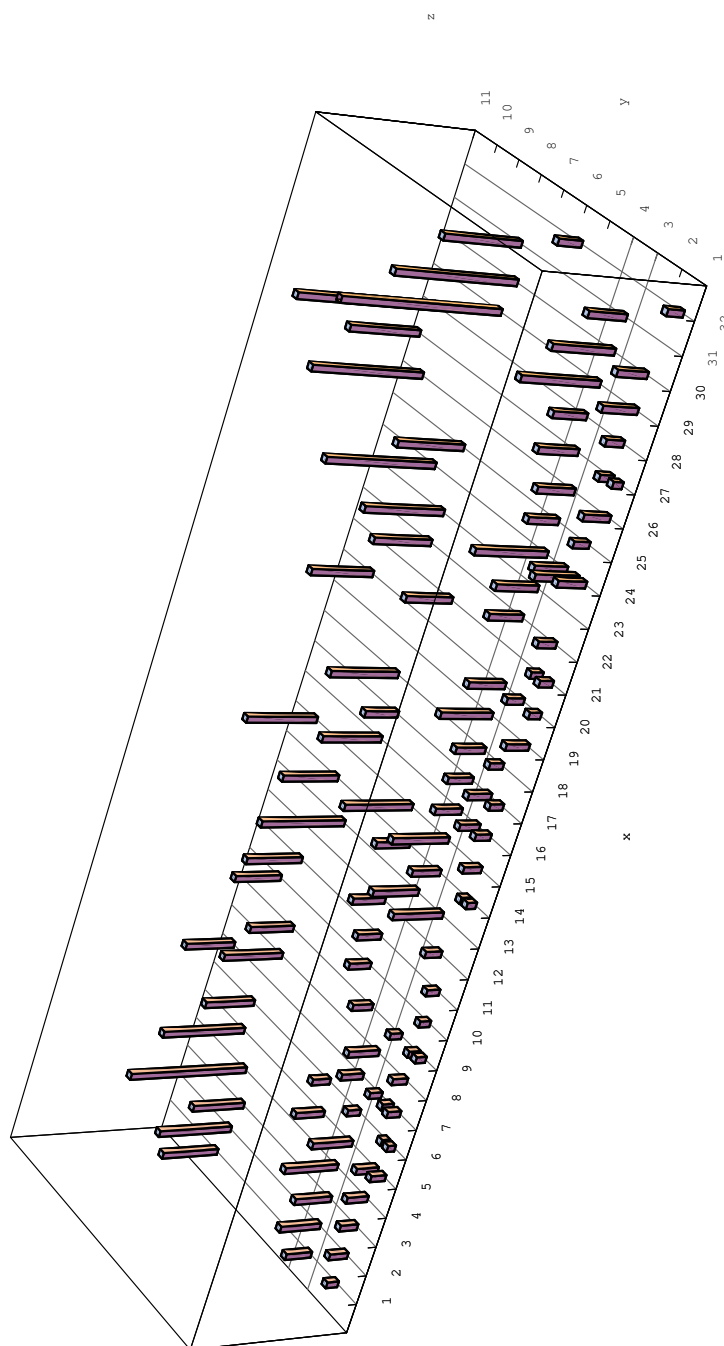


Fig. 11: Length of the cycles and amplitudes comparison: X - the index number, Y - estimated length of the cycle, Z - estimated amplitude.

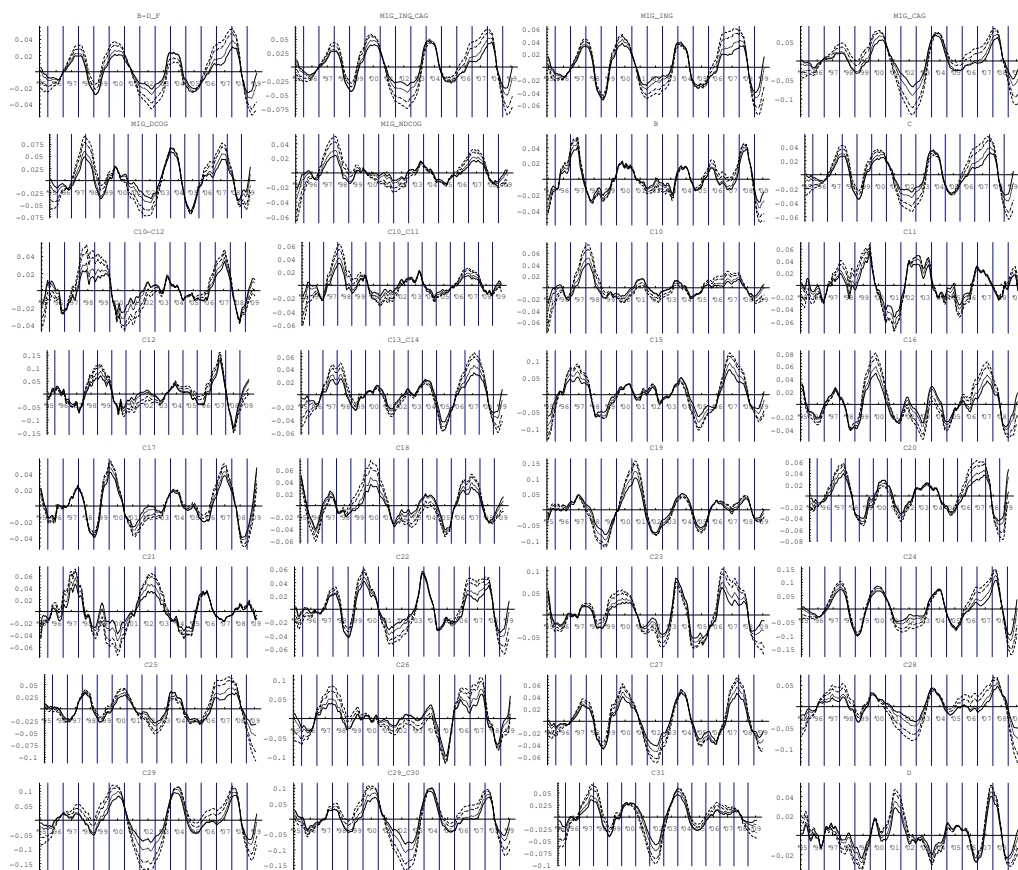


Fig. 12: Business cycle (extracted by HP filter) in sectors and subsectors of industrial production after logarithm and application of centered moving average filter for $\lambda = 5\,000$ (continuous line) $\lambda = 12\,000$ (dotted line) $\lambda = 32\,000$ (dotted and dashed line) $\lambda = 55\,000$ (dashed line).